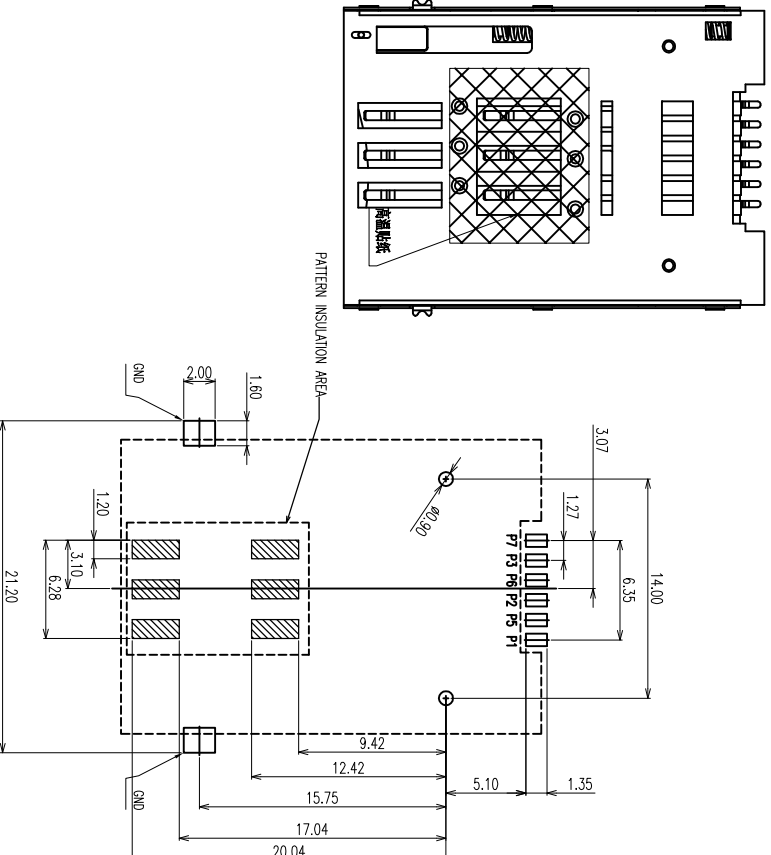
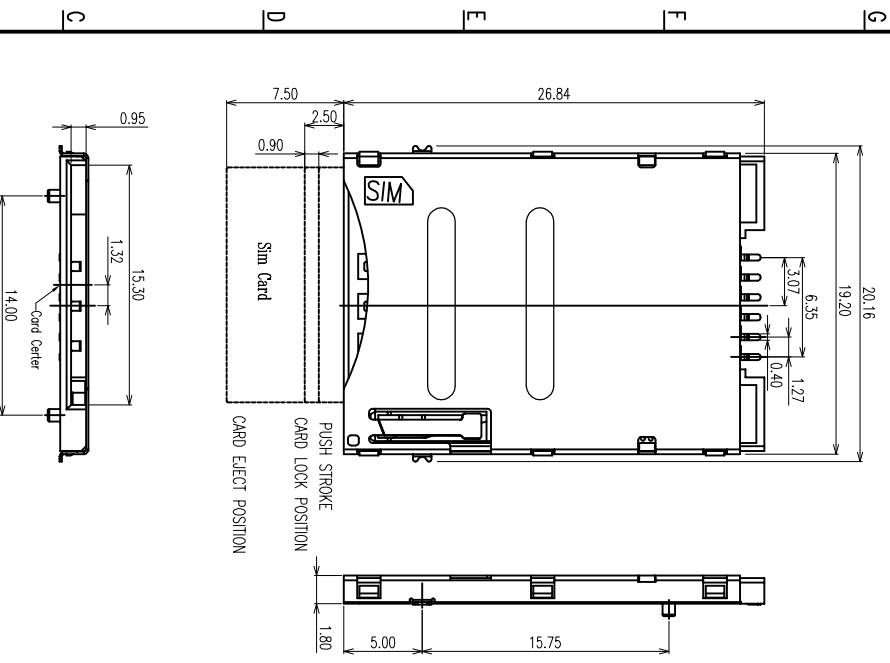


REV	ECON #	DESCRIPTION	DRAWING	APPROVED	DATE
A		NEW RELEASE	DEVI		



Specification:

- *Electrical Characteristics:
 - Current Rating:0.5A
 - Withstanding Voltage:AC500V r.r.m.s.
 - Insulation Resistance:100MΩminimum at DC 500V
 - Contact Resistance:100mΩMaximum.
- *Mechanical Characteristics:
 - Mating Cycles:3000 Insertions.
 - Environment:
 - Operating Temperature:-40T+60T
 - *Material:
 - 1.Housing:HI-Temp plastic UL 94V-0 Rated.
 - 2.Contact:Copper Alloy.
 - 3.Shell:SUS.
 - *Finish :
 - 3μ" Gold plated on contact area,100μ"Min Tin plated on solder tails, Base Nickel :500μ"Min
- ▽ DENOTES MAJOR DIMENSION MEASUREMENT REQUIRED THE PRODUCT ACCORD WITH THE REGULATION OF ROHS AND "MANAGEMENT REGULATIONS FOR THE ENVIRONMENT RELATED SUBSTANCES AND MATERIALS"

PRODUCT NO.
SM13-06 C B 09-03
① ② ③ ④

① PRODUCT SERIES: SM13: SIMCARD PUSH-PUSH CONNECTOR
② PIN NO.:
06: 6PIN
③ MATERIAL: C: LCP
④ SERIES NO.: 03: SIMCARD PUSH-PUSH 1.80 连接器 零件(含规格书)

ITEM	NAME	QTY/EACH	MATERIAL/FINISHED	REMARK
1	HOUSING	1	THEMOPLASTIC UL94V-0 BLACK	
2	CONTACT	6	COPPER ALLOY, AU PLATED	
3	SPRING	1	SUS 301	
4	SLIDER	1	THEMOPLASTIC UL94V-0 BLACK	
5	SHELL	1	SUS301	
6	STAMPLE	1	SUS301	

CONNECTOR TERMINAL NO.	PIN NO.	VCC : PWR SIGNAL AND GND
PIN 1		RST : RESET SIGNAL
PIN 2		CLK : CLOCKING SIGNAL
PIN 3		GND : PWR SIGNAL AND GND
PIN 5		VPP : PROGRAMMING VOLTAGE
PIN 6		I/O : SERIAL DATA INPUT/OUTPUT
PIN 7		

CUSTOMER DRAWING

GENERAL TOLERANCE
X: ±0.20
.XX: ±0.15
.XXX: ±0.10

ANGEL TOLERANCE
X: ±3°
.XX: ±2°
.XXX: ±1°

YTCOON
Dongguan YTCOON Electronics Technology Co., Ltd

DRAWING DEVI
APPROVED P/N: SM13-06CB09-03
DATE 2012.04.26
DRAWING NO. C-SM13-05

UNIT mm
SCALE 1:1
SIZE A4
SHEET 1 of 2
REV A