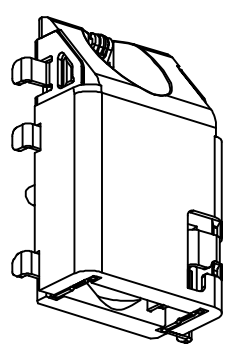
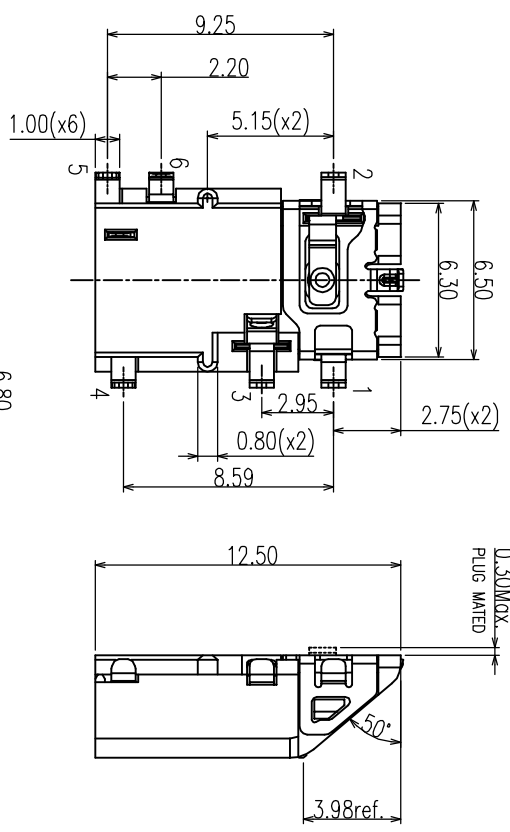
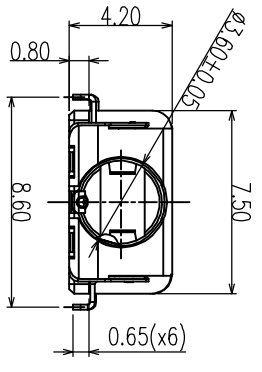


| REV | ECN # | DESCRIPTION | DRAWING | APPROVED | DATE |
|-----|-------|-------------|---------|----------|-----------|
| A | | NEW RELEASE | DE1 | | 2012/4/24 |
| | | | | | |
| | | | | | |



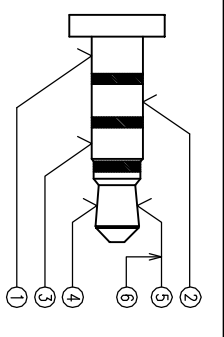
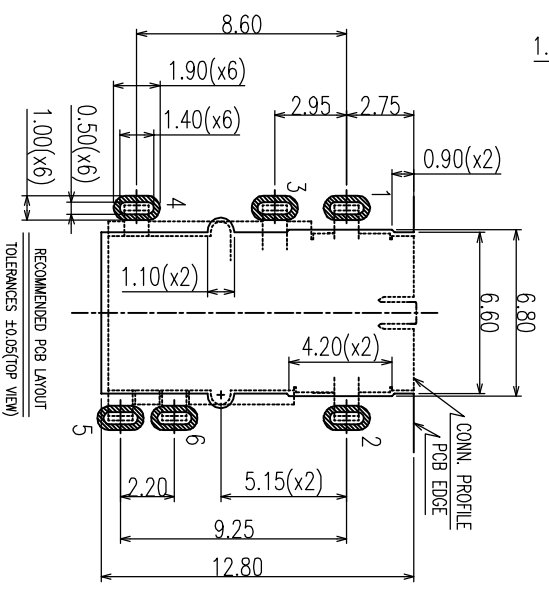
NOTES:
 1. MATERIAL: SEE TABLE A
 2. PACKAGE: TAPE&REEL

PRODUCT NO. _____
 PJ22-06 A B 05-00
 ① ② ③ ④

PRODUCT SERIES:
 ① PJ22: PHONE JACK CONNECTOR slim type.
 ② PIN NO.:
 06: 6PIN
 ③ MATERIAL:
 A: LCP
 ④ SERIES NO.:
 00: $\phi 3.5\text{mm}$ 沉板0.8mm, 斜口

TABLE A:

| ITEM | NAME | QTY | MATERIAL / FINISH |
|------|-----------|-----|---------------------------------------|
| 7 | HOUSING | 1 | HIGH TEMPERATURE UL 94-V0 BLACK |
| 6 | CONTACT 6 | 1 | COPPER ALLOY/CONTACT AREA GOLD PLATED |
| | CONTACT 5 | 1 | COPPER ALLOY/CONTACT AREA GOLD PLATED |
| | CONTACT 4 | 1 | COPPER ALLOY/CONTACT AREA GOLD PLATED |
| | CONTACT 3 | 1 | COPPER ALLOY/CONTACT AREA GOLD PLATED |
| | CONTACT 2 | 1 | COPPER ALLOY/CONTACT AREA GOLD PLATED |
| 1 | CONTACT 1 | 1 | COPPER ALLOY/CONTACT AREA GOLD PLATED |



YTCNN
 Dongguan YTCNN
 Electronics Technology Co., Ltd.

CUSTOMER DRAWING

GENERAL TOLERANCE
 X ± 0.20
 .XX ± 0.15
 .XXX ± 0.10

ANGEL TOLERANCE
 X $\pm 5^\circ$
 .XX $\pm 7^\circ$
 .XXX $\pm 1^\circ$

DRAWING DEVT
 TITLE: 斜口沉板0.8六脚D IP耳机座
 P/N: PJ22-06AB05-00
 DRAWING NO. C-1PJ22-00

| | | | | | | | | | | | |
|------|------------|------|----|-------|-----|------|----|-------|--------|-----|---|
| DATE | 2013.06.04 | UNIT | mm | SCALE | 1:1 | SIZE | A4 | SHEET | 1 of 1 | REV | A |
|------|------------|------|----|-------|-----|------|----|-------|--------|-----|---|

1 2 3 4 5 6 7 8 9 10