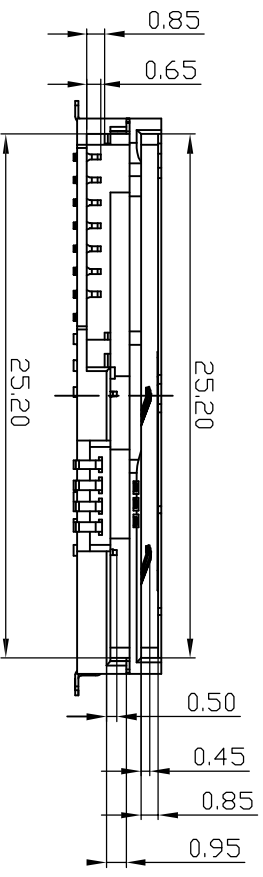
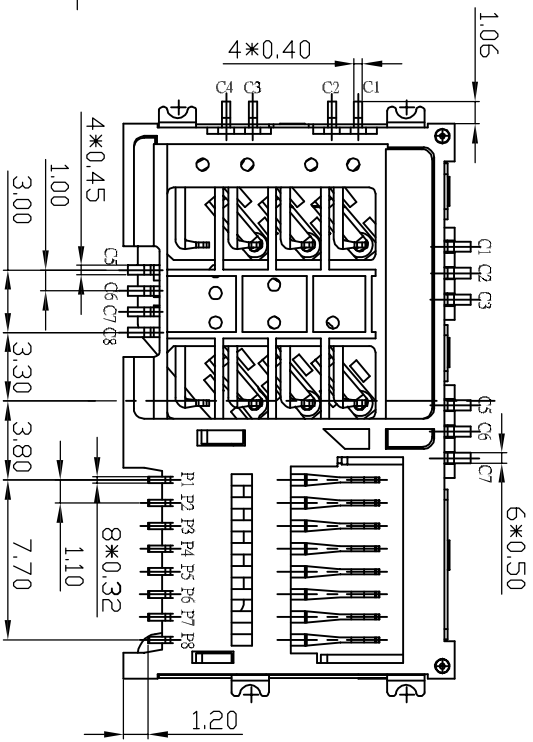
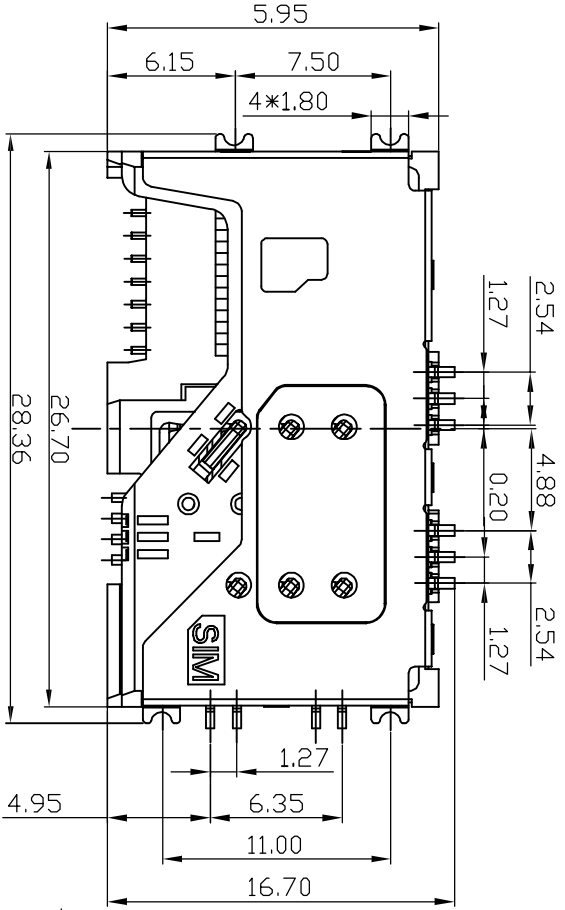


REV	ECN #	DESCRIPTION	DRAWING	APPROVED	DATE
A		NEW RELEASE	DEV1		04/26/12



Notes :

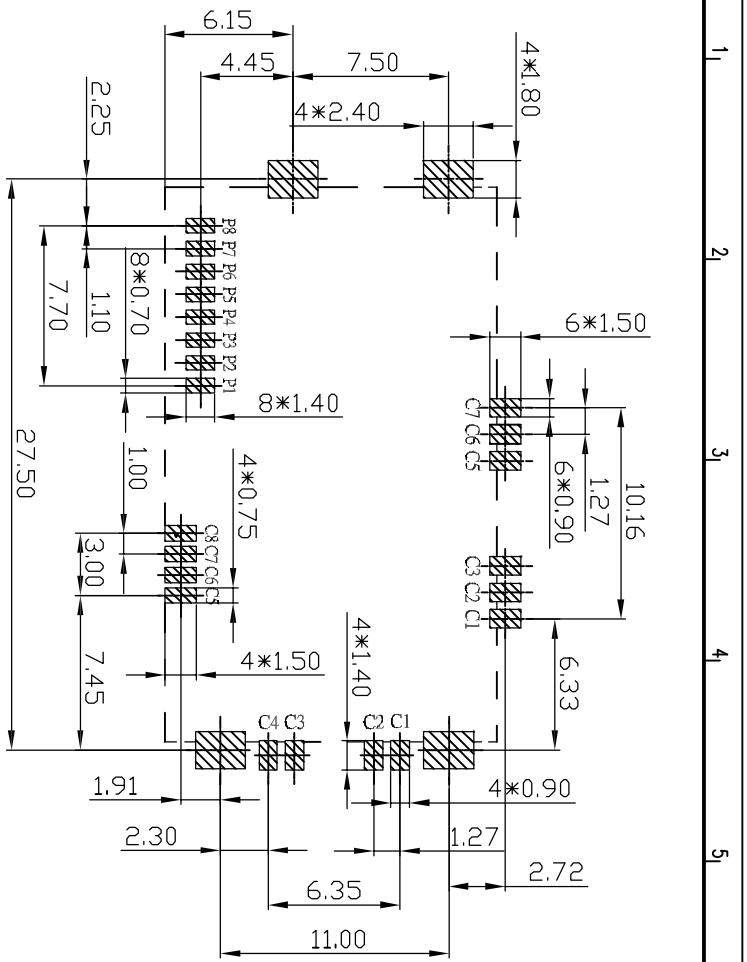
1. Contacts chip cards according to ISO7816 and Plug In SIM-Card.
2. Material :
Housing:HIGH TEMPERATURE THERMOPLASTIC, BLACK, UL94V-0.
Terminal : Alloy Copper;
Shell: Stainless Steel,SUS304;
Terminal Plating: Card side plating 0.127um(5μ") gold min.
Gold flash other area.
Under layer 1.27~2.54 um(50μ"-100μ") Ni all over.
Shell Plating: Gold Flash plating on soldertail area.
3. CONTACT NORMAL FORCE IS 40g MIN.
4. PACKING:TAPE & REEL.

料号编码

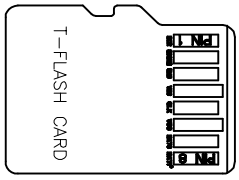
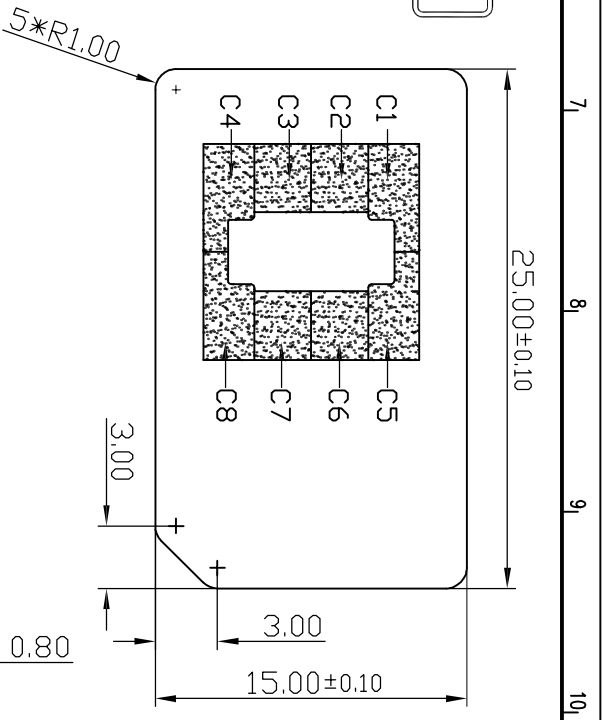
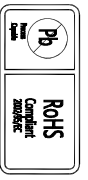
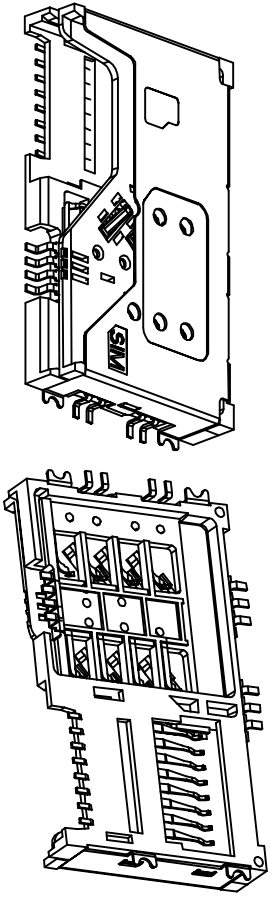
SM20-22 A B 05-00

- ① 产品系列: SM20: DUBLE SIMCARD +TF CARD CONNECTOR
- ② 产品PIN数: 22: 22PIN
- ③ 塑胶材料: A: LCP
- ④ 塑胶颜色: B: 黑色
- ⑤ 产品流水号: 00:

CUSTOMER DRAWING		YTCONN http://www.hytyconn.com		Dongguan YTCONN Electronics Technology Co., Ltd.	
GENERAL TOLERANCE	X ±0.20 XX ±0.15 XXX ±0.10	DRAWING	DEV1	TITLE:	DUBLE SIM CARD+TF CARD 3IN1
ANGEL TOLERANCE	X ±7 XX ±7 XXX ±1	APPROVED		P/N:	SM20-22AB05-00
		DATE	2012.10.20	DRAWING NO.:	C-SM20-00
		UNIT	mm	SCALE	1:1
		SIZE	A4	SHEET	1of2
		REV	A		



RECOMMENDED P.C.B LAYOUT
 GENERAL TOLERANCES:±0.05



T-FLASH CARD
PIN ASSIGNMENT

PIN NO.	NAME	TYPE	DESCRIPTION
PIN 1	DATA2	I/O/pp	Date Line(bit2)
PIN 2	CD/DAT3	I/O/pp	Card Detect/Date Line(bit3)
PIN 3	CMD	PP	Command Resonance
PIN 4	VDD	S	Supply Voltage
PIN 5	CLK	I	Clock
PIN 6	VSS2	S	Supply VoltageGround
PIN 7	DATO	I/O/pp	Date Line(bit0)
PIN 8	DAT1	I/O/pp	Date Line(bit1)

CUSTOMER DRAWING		YTCONN http://www.ytconn.com		Dongguan YTCONN Electronics Technology Co., Ltd.	
GENERAL TOLERANCE	X ±0.20 XX ±0.15 XXX ±0.10	DRAWING	DEYI	TITLE:	DUBLE SIM CARD+TF CARD 3IN1
ANGEL TOLERANCE	X ±5° XX ±7° XXX ±1°	APPROVED		P/N:	SM20-22AB05-00
		DATE	2012.10.20	DRAWING NO.	C-SM20-00
		UNIT	mm	SCALE	1:1
		SIZE	A4	SHEET	2of2
		REV	A		

