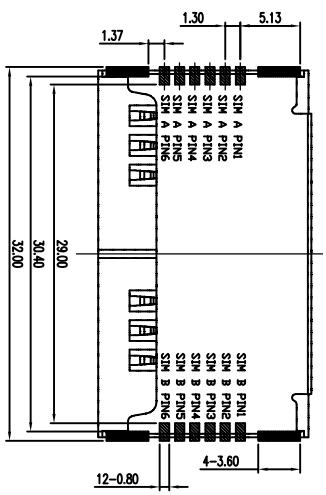
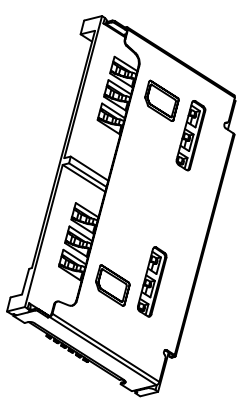
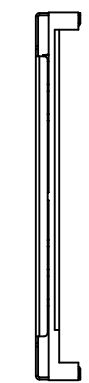
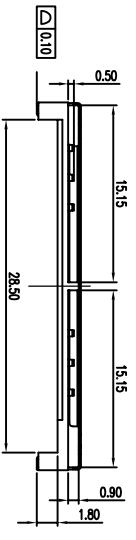
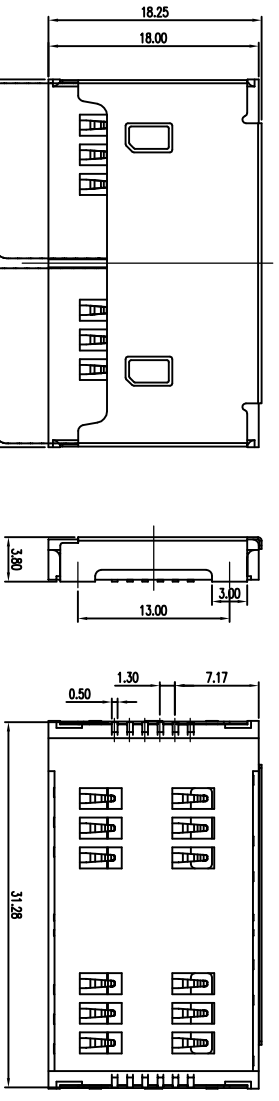


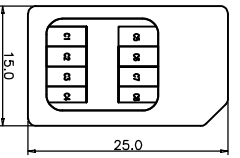
REV	ECN #	DESCRIPTION	DRAWING	APPROVED	DATE
A		NEW RELEASE	DEY1		



Recommended P.C.B. Layout(Tolerance=±0.05)
AS VIEW FORM COMPONENT SIDE



- C1 : VCC
- C2 : RST
- C3 : CLK
- C4 : Reserved
- C5 : RSTP
- C6 : VPP
- C7 : I/O
- C8 : Reserved



Pin NO.	DESCRIPTION
SIM CARD A PIN1	RST
SIM CARD A PIN2	VCC
SIM CARD A PIN3	CLK
SIM CARD A PIN4	I/O
SIM CARD A PIN5	VPP
SIM CARD A PIN6	GND
SIM CARD B PIN1	RST
SIM CARD B PIN2	CLK
SIM CARD B PIN3	VCC
SIM CARD B PIN4	GND
SIM CARD B PIN5	VPP
SIM CARD B PIN6	I/O

料号编码
SM33 - 12 A B 05 - 00

① 产品系列:
SM33:SIM卡连接器

② 产品PIN数:
12: 12PIN

③ 塑胶材料:
A: LCP

④ 塑胶颜色:
B: 黑色

⑤ 产品流水号
00:侧插双排SIM CARD第03,811

Specification
*Electrical Characteristics:
Contact Current Rating:0.5 Amperes.
Dielectric Withstanding Voltage:AC500V r.m.s.
Insulation Resistance:500 MΩ Minimum.
Contact Resistance: 30 mΩ Maximum.

*Environmental:
Operating Temperature: -55C~+85C.

*Environmental:
Mating Cycles: 5,000 Insertions.

*Material:
Insulator:HI-Temp Plastic UL 94V-0 Rated.
Contact:Copper Alloy.
Shell:Copper Alloy.

CUSTOMER DRAWING		DRAWING		TITLE	
GENERAL TOLERANCE		DRAWING		DEY1	
X ±0.20		APPROVED		P/N:	
.XX ±0.15		DATE		SM33-12AB05-00	
.XXX ±0.10		2012.05.25		DRAWING NO.	
ANGEL TOLERANCE		UNIT		SCALE	
X ±3°		mm		1:1	
.XX ±2°		SCALE		SIZE	
.XXX ±1°		1:1		A4	
		SCALE		SHEET	
		1:1		1 of 1	
		SCALE		REV	
		1:1		A	

YTCONN
Dongguan YTCONN
Electronics Technology Co., Ltd.

侧插双排SIM CARD