

REV	ECN #	DESCRIPTION	DRAWING	APPROVED	DATE
A		NEW RELEASE	DEV1		2012/4/24
B		去除胶芯侧面槽位	DEV1		2012/11/29

NOTES :

- 1.0. RATING :
- 1.1. VOLTAGE : 12 VAC (R.M.S.)
- 1.2. CURRENT : 1 AMPERE MAXIMUM PER CONTACT AT 30°C T-RISE
- 1.3. TEMPERATURE : -20°C TO +70°C
- 2.0. ELECTRICAL CHARACTERISTIC :
- 2.1. CONTACT RESISTANCE : 50 MILLIOHMS MAXIMUM INITIAL
- 2.2. INSULATION RESISTANCE : 100 MEGOHMS MINIMUM
- 2.3. DIELECTRIC WITHSTANDING VOLTAGE : 500 VAC AT SEA LEVEL
- 3.0. MATERIALS :
- 3.1. CONTACT : COPPER ALLOY
- 3.2. HOUSING : THERMOPLASTIC, GLASS FILLED, 130°C, UL 94V-0 RATED
- 4.0. MECHANICAL :
- 4.1. INSERTION FORCE(PER CONTACT): 300~3000 GRAMS
- 4.2. WITHDRAWAL FORCE(PER CONTACT): 300~3000 GRAMS
- 4.3. DURABILITY ,MINIMUM: MATED 5000 TIMES WITHOUT DEGRADING ELECTRICAL CHARACTERISTICS
- 4.4. CONTACT FORCE, MINIMUM: 80 GRAMS

PRODUCT NO.

PJ04-06 A B 05-0X

① ② ③ ④

PRODUCT SERIES:

① PJ04: PHONE JACK CONNECTOR H=4.5mm

② PIN NO.:

04: 4PIN

06: 6PIN

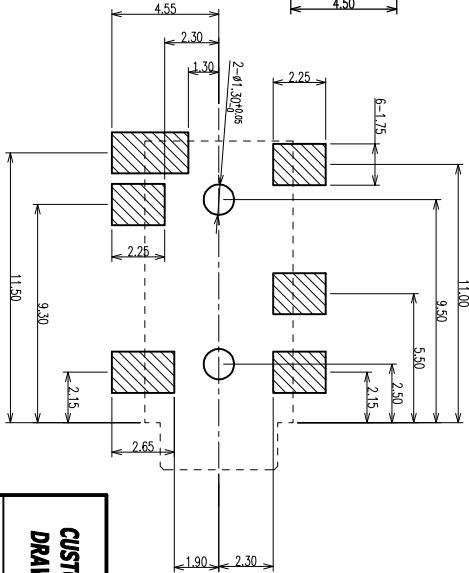
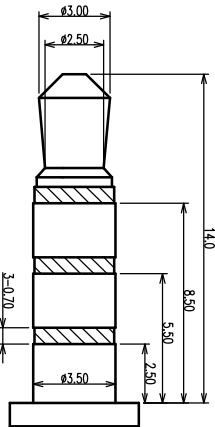
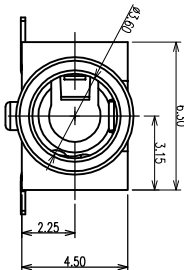
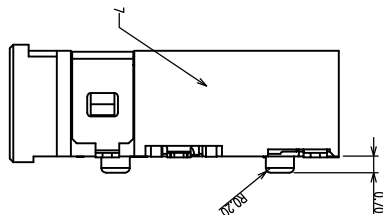
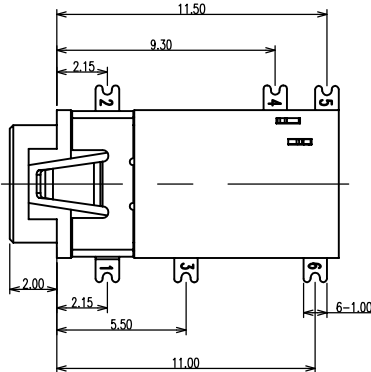
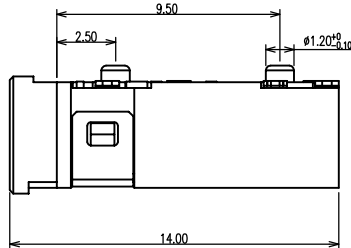
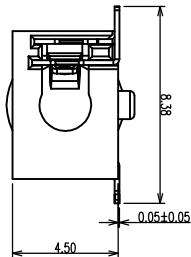
③ MATERIAL:

A: PA-9T

④ SERIES NO.:

00: ø3.5mm 长头全金 H=4.5mm

04: ø3.5mm 长头半金 H=4.5mm



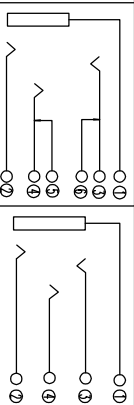
Recommended PCB layout

(ø3.50mm 4 POLE PLUG DETAIL DRAWING)

NO.	Part Name	QTY	Description	Plated/Color	Note
-----	-----------	-----	-------------	--------------	------

1	TERMINAL A	1	C5210R-H T=0.20mm	Plated Au	
2	TERMINAL B	1	C5210R-H T=0.20mm	Plated Au	
3	TERMINAL C	1	C5210R-H T=0.20mm	Plated Au	
4	TERMINAL D	1	C5210R-H T=0.20mm	Plated Au	
5	TERMINAL E	1	C5210R-H T=0.20mm	Plated Au	
6	TERMINAL F	1	C5210R-H T=0.20mm	Plated Au	
7	HOUSING	1	CP1-20MCF/PMA6+40MCF	Color: BLACK	(UL-94V-0) P/N

SCHEMATIC



CUSTOMER DRAWING

YTCOON

Dongguan YTCOON Electronics Technology Co., Ltd.

GENERAL TOLERANCE

X ±0.20

.XX ±0.15

.XXX ±0.10

ANGEL TOLERANCE

X ±3°

.XX ±2°

.XXX ±1°

DRAWING

APPROVED

DATE

2012. 11. 29

UNIT

mm

SCALE

1:1

TITLE:

PHONE JACK CONNECTOR 4.5h

P/N:

PJ04-06AB05-00/04

DRAWING NO.

C-PJ04-00

SIZE

A4

SHEET

1 of 1

REV

B