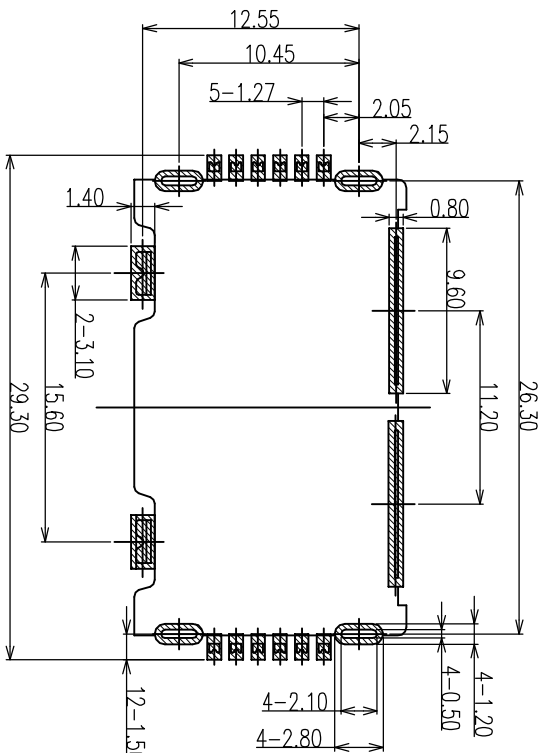
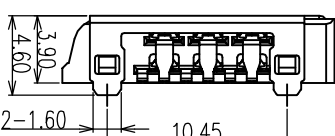
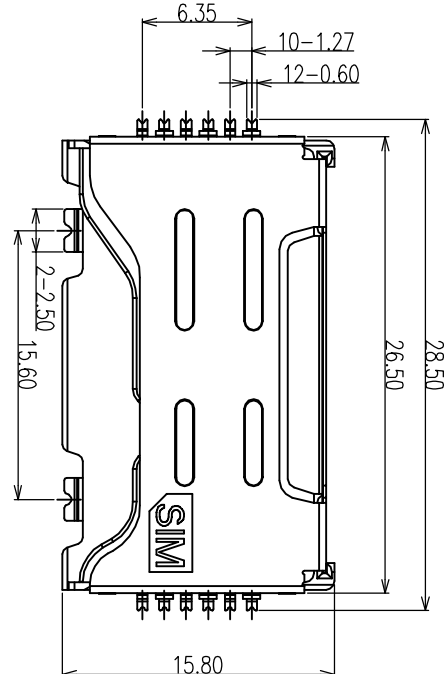
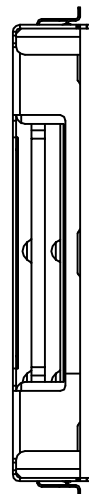


REV	ECN #	DESCRIPTION	DRAWING	APPROVED	DATE
A		NEW RELEASE	DEV1		12/11/12



RECOMMENDED P.C.B. LAYOUT  
(TOLERANCE ±0.05)

料号编码

SM37-12 A B 05-00

① ② ③ ④ ⑤

① 产品系列: SM37: DUBLE SIMCARD

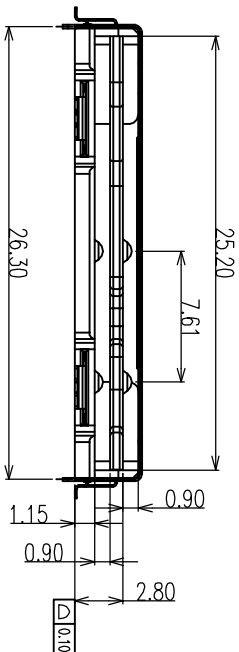
② 产品PIN数: 12: 12PIN

③ 塑胶材料: A: LCP

④ 塑胶颜色: B: 黑色

⑤ 产品流水号 00:

NOTES:  
1. ELECTRICAL SPECIFICATIONS:  
CURRENT RATING: 0.5A.  
VOLTAGE RATING: 5V/  
CONTACT RESISTANCE: 50 MILL.OHM MAX.  
INSULATION RESISTANCE: 1000 MEG.OHM MIN.  
2. MECHANICAL SPECIFICATIONS:  
DURABILITY: 5000 CYCLES MIN.



**CUSTOMER DRAWING**  
**YTCONN**  
http://www.hnycconn.com  
**Dongguan YTCONN Electronics Technology Co., Ltd**

GENERAL TOLERANCE  
X ±0.20  
XX ±0.15  
XXX ±0.10

ANGEL TOLERANCE  
X ±.3  
XX ±.2  
XXX ±.1

DRAWING  
DEV1

DATE  
2013.04.28

UNIT  
mm

SCALE  
1:1

SIZE  
A4

SHEET  
1 of 1

REV  
A